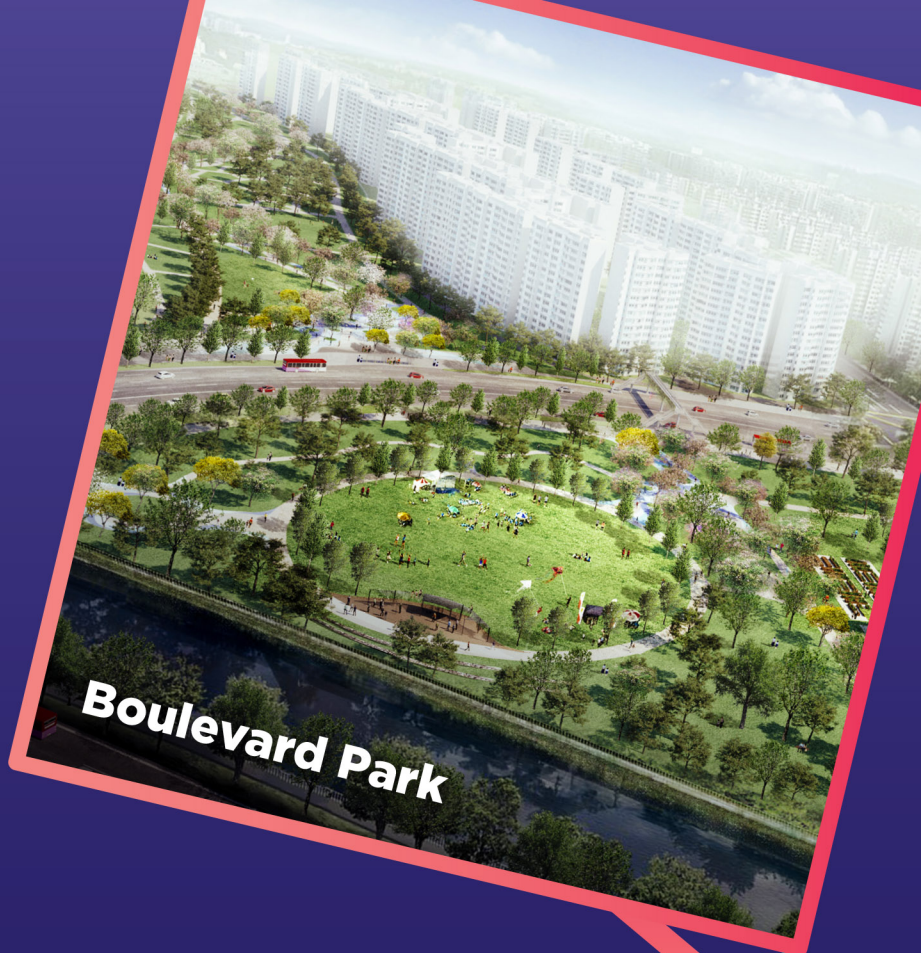




**Cycling Bridge Connecting
Tampines to Pasir Ris**



Boulevard Park

OUR TAMPINES

VISION TO REALITY

5-YEAR MASTER PLAN

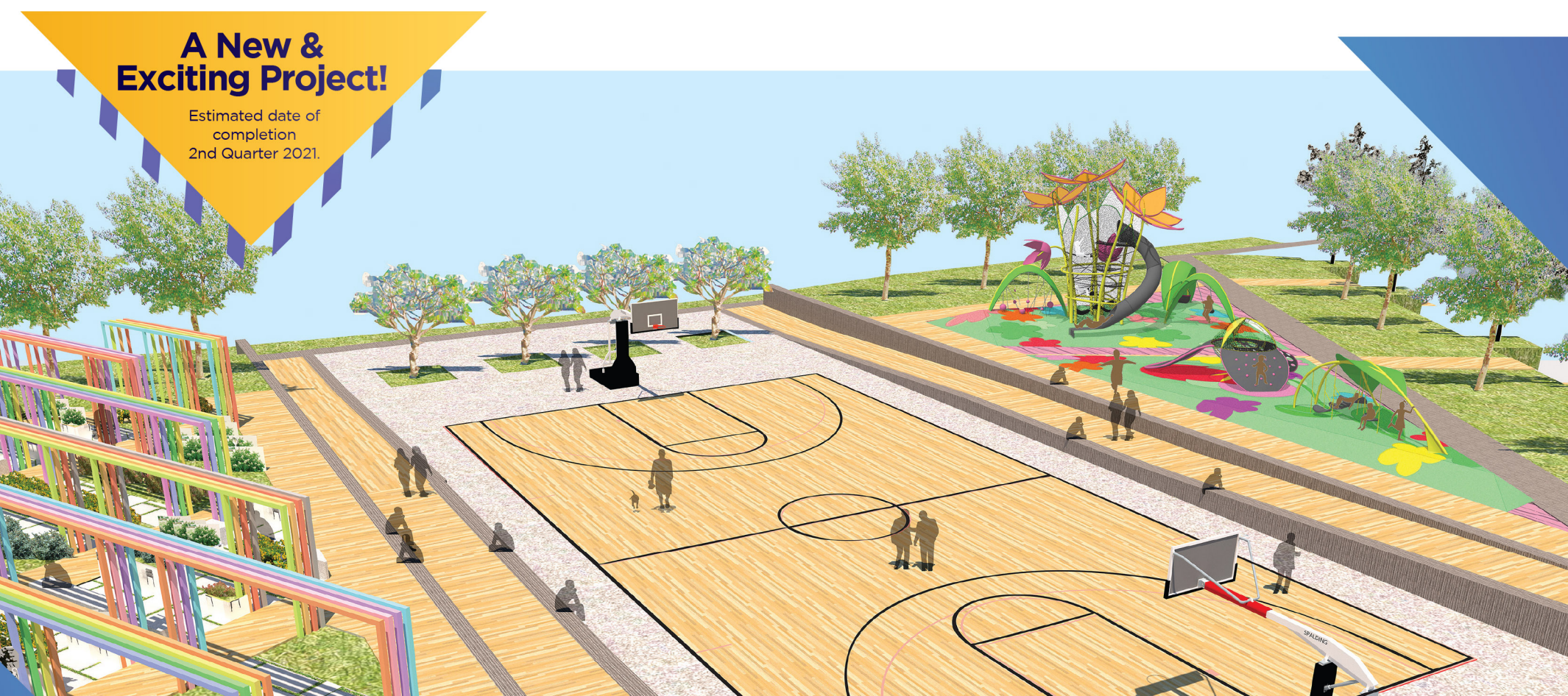
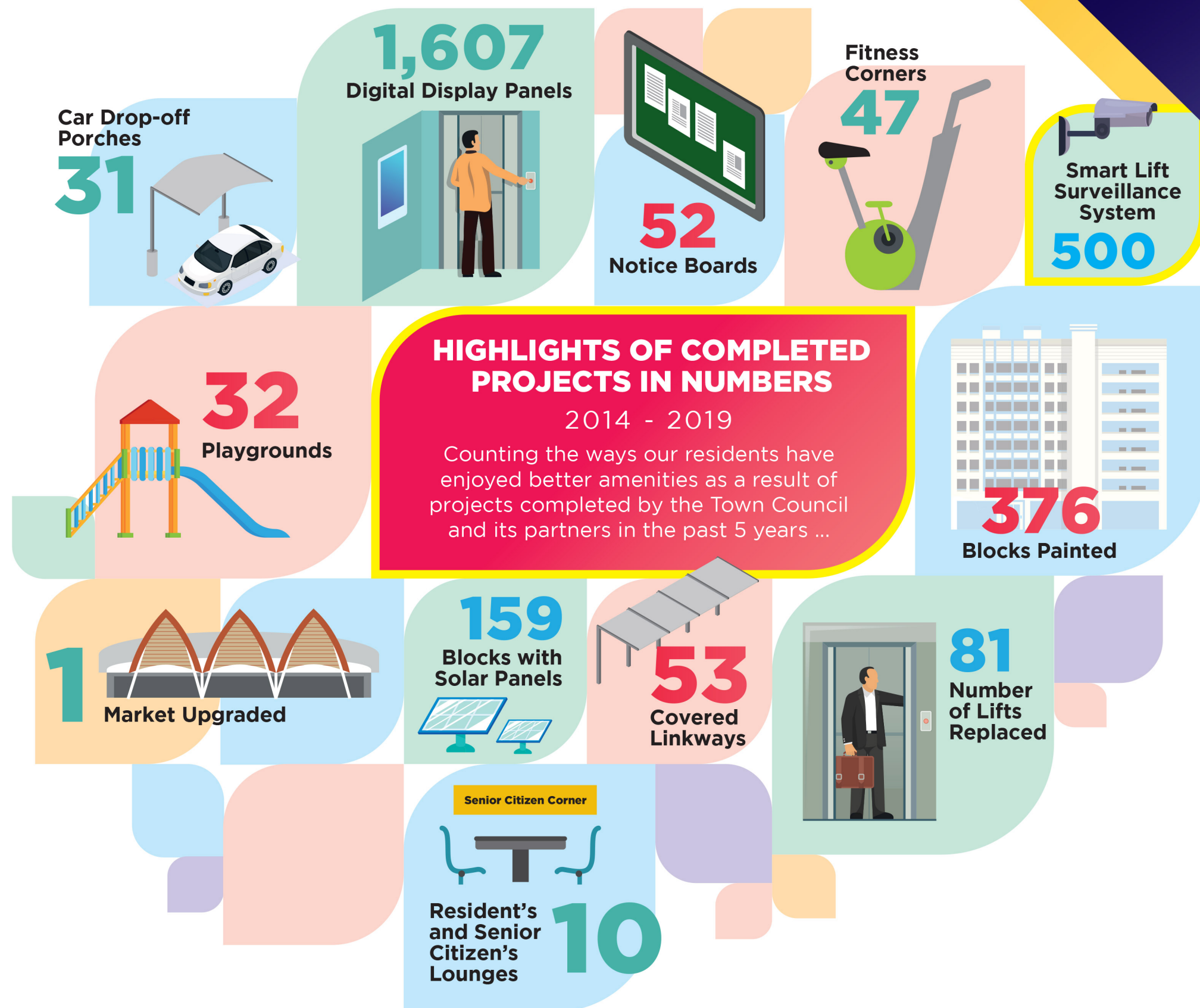


**Mounds Playground
Under the MRT Viaduct**



**ABC Waters Programme
@ Sungei Tampines**

5



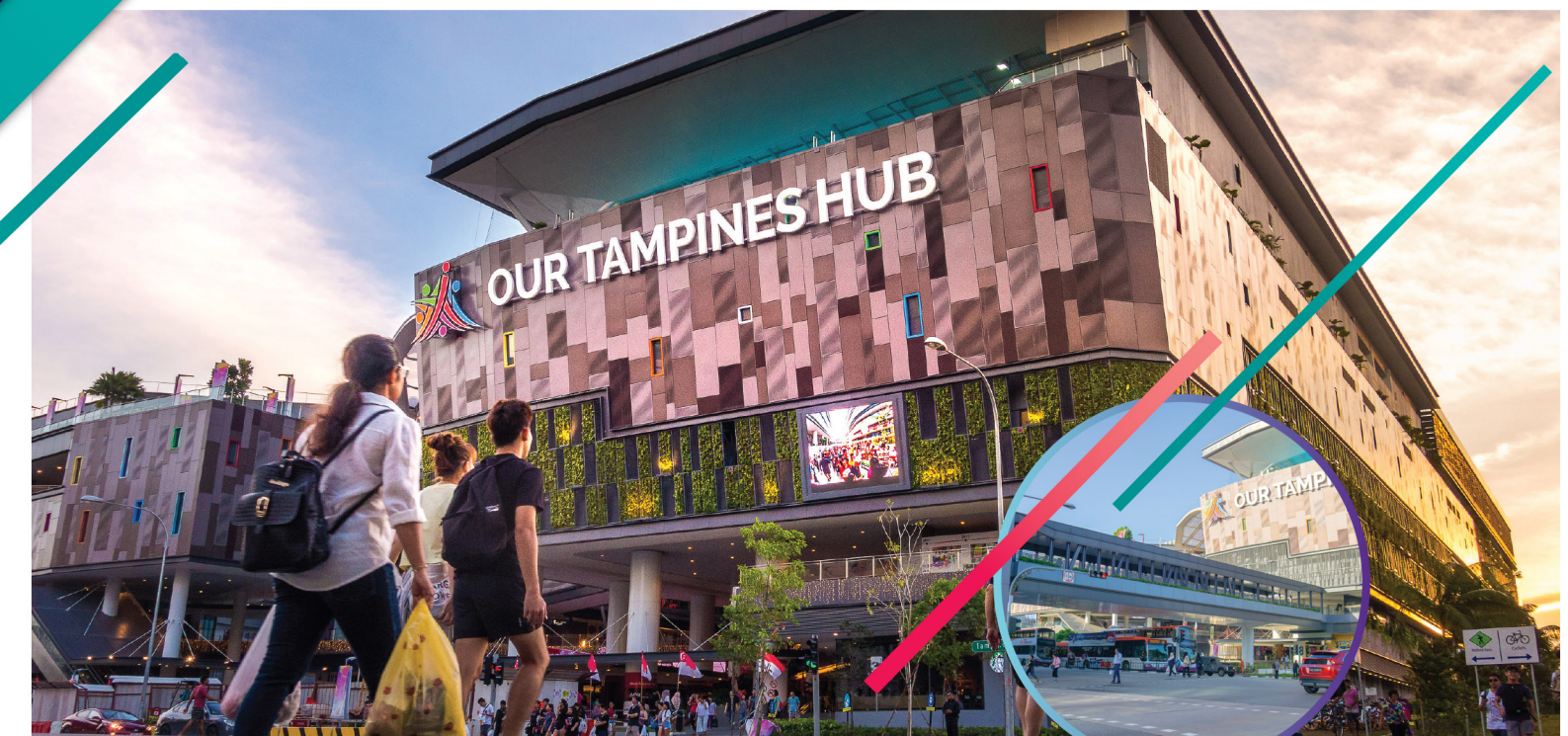
New Basketball Court with Community Garden and Playground
Near Blk 201B
Supported by Community Improvement Projects Committee.

COMPLETED PROJECTS

2015 - 2019

BRINGING PEOPLE TOGETHER

While enjoying the convenience of great amenities, residents can be proud of the many "firsts" achieved by Tampines. Our Tampines Hub is Singapore's first integrated lifestyle hub designed to bring families and friends under one roof. Our pedestrians have also felt safer since Tampines became the first town to have its own dedicated cycling network. There are many reasons to be a proud Tampines resident!



Our Tampines Hub

1st Ever Integrated Lifestyle Hub

3 New Downtown Line MRT Stations



Tampines East MRT Station

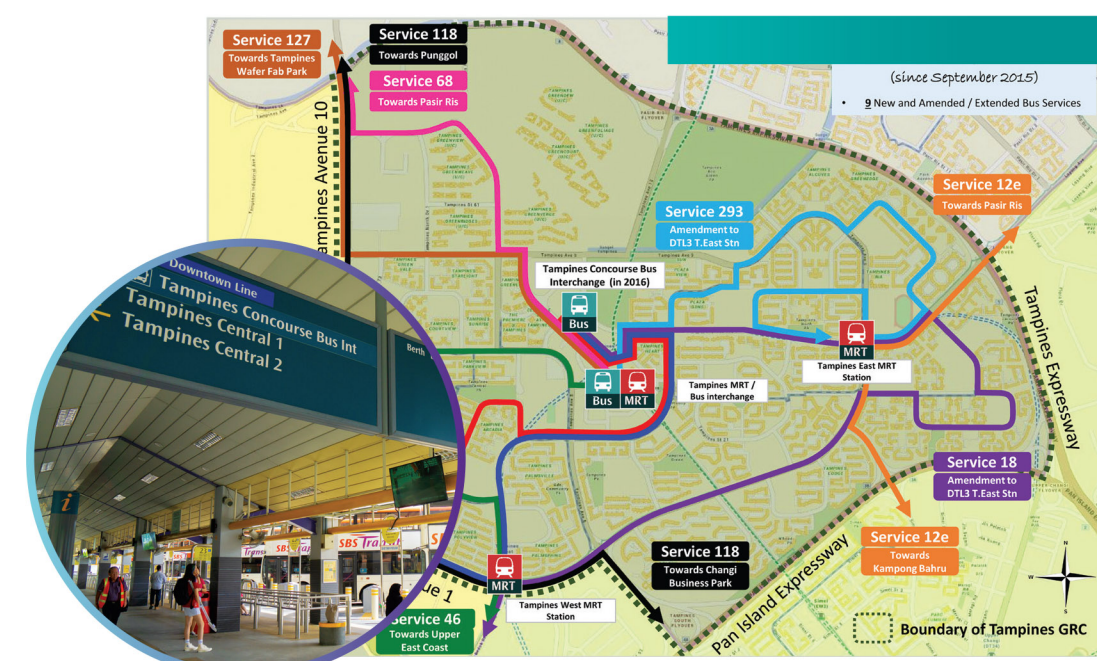


Tampines West MRT Station



Tampines MRT Station

Bus Network Enhancements



Tampines Concourse Bus Interchange

1st Ever Dedicated Cycling Network



COMPLETED PROJECTS

2015 - 2019

Neighbourhood Renewal Programme Batch 6
Blk 485A - 490B



New Playground
Near Blk 489C

BUILDING A BETTER HOME

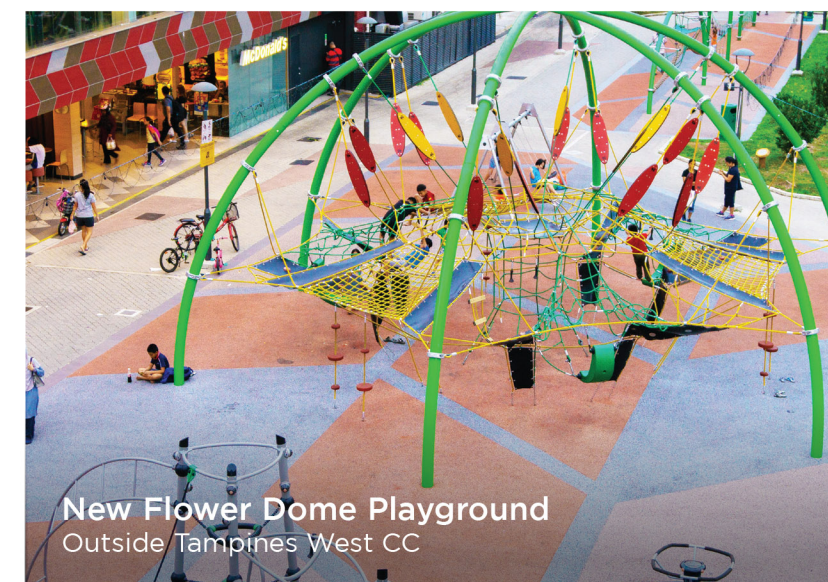
Enhancement projects were completed to improve the facilities and shared spaces in Tampines. These projects have one common objective - to give everyone a better home. In addition to keeping our home inclusive and sustainable, Tampines continues to explore smart and modern ways to serve our residents better. The latest Smart Lift Surveillance System keeps our residents safe while our Digital Display Panels provide timely updates about national issues.



New Fitness Corner
Near Blk 489A

Neighbourhood Renewal Programme Batch 7

Blk 821 - 829, 826A, 828A, 887, 887A, 888A, 889, 889A, 891, 891A - B, 892, 892A, 893, 893A, 894 - 899, 894A, 895A, 896A, 897A, 898A & 899A.



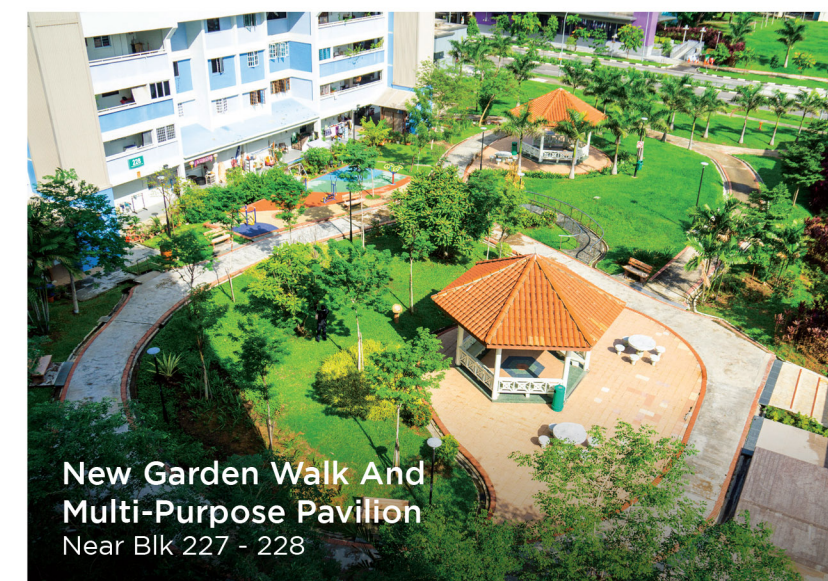
New Flower Dome Playground
Outside Tampines West CC



New Play@West Multi-Purpose Court
Tampines Street 81

Neighbourhood Renewal Programme Batch 5

Blk 201, 201A - E, 211 - 214 & 225 - 227



New Garden Walk And Multi-Purpose Pavilion
Near Blk 227 - 228



Upgraded Tampines N2 Shopping Street
Blk 201D & 201E

Supported By Community Improvement Projects Committee



Upgraded Tampines Changkat Butterfly Garden
Near Blk 124

Repairs & Redecoration



Upgraded Tampines Round Market & Food Centre
Blk 137

Neighbourhood Renewal Programme Batch 4

Blk 865 - 867, 867A, 868 - 871, 871A, 872 - 874, 874A, 880A, 881 - 886, 886A



New Study Corner
Blk 874A

Neighbourhood Renewal Programme Batch 10

Blk 842A - H & 856A - F



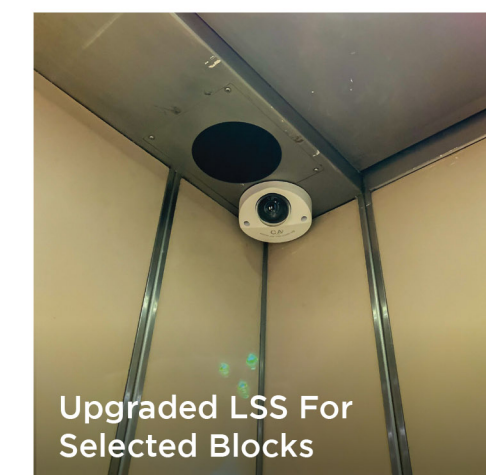
New Planter Boxes
Near Blk 842G

Digital Display Panels



Installed In More Than 1,600 Lifts

Smart Lift Surveillance System (LSS)



Upgraded LSS For Selected Blocks

VISION TO REALITY

MASTER PLAN
FUTURE
2020 - 2024

ACTIVE THOROUGHFARE BRINGS FAMILIES TOGETHER

The Large Scale Town Wide project under the MRT viaduct enhances the park connector stretching from Tampines Town Centre to PIE Expressway. The viaduct serves as a popular thoroughfare connecting many residential areas to the Tampines MRT Station. This project will enhance the linear park with landscape features like new gardens, playgrounds and mazes.

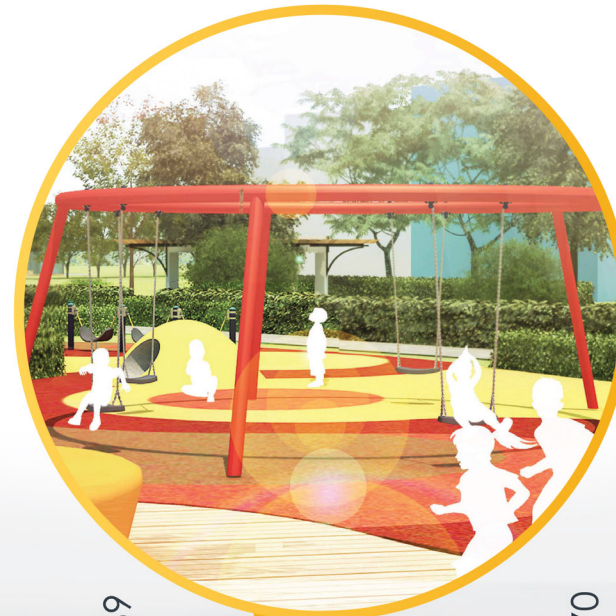
BIKE MAZE

Here, children can pedal on the colourful cycling path, facing obstacles such as humps, zigzag columns and quirky luminous frames. The Bike Maze brings out the fun and excitement of being a young cyclist.



MOUNDS PLAYGROUND

The Mounds Playground has trampolines for you to jump on to reach the sky, tunnels to burrow into, various swings for toddlers, groups, and even parents who want to swing with their children.



UNDER THE TREE

New family swings are placed under the shade of existing large trees for park-goers to take a breather and appreciate the spinning wind sculptures amongst blooming flowers.



ADVENTURE FITNESS CORNER

The last pit stop in this linear park is the Adventure Fitness Corner. It is equipped with a children's fitness corner and a sloping adventure play area.



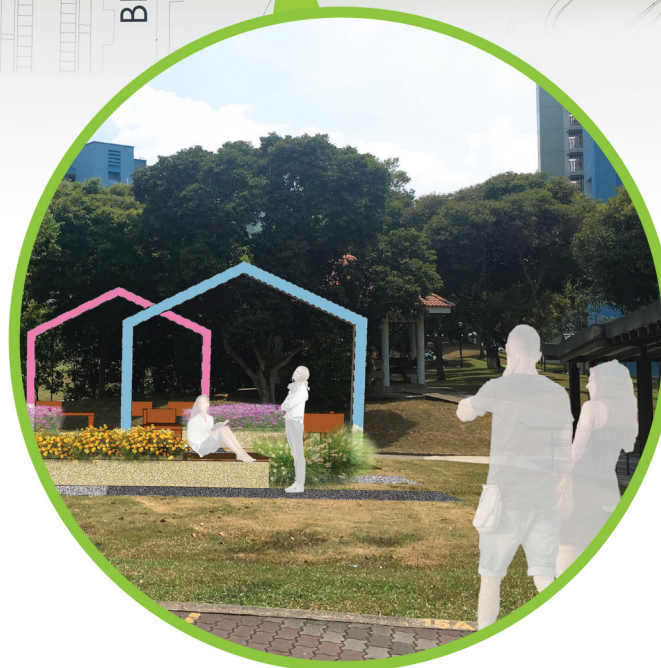
COMMUNITY PLAZA

The Community Plaza marks the entrance of the development. It consists of landmark signage and a shaded seating area for meet-ups.



THE GARDEN

Next, you will journey into the gardens. Nestled amongst colourful flowers, are seats where you can rest while appreciating and admiring the beauty of nature.



THE LAWN

Journeying on, you will reach the new lawn, accented with decorative screens, greenery and benches for resting. It's the perfect tranquil spot to appreciate the lush planting surroundings.



THE STREAM

A boardwalk with new decking sits beside the new stream, while the bioswale acts as a natural filter for rainwater, beautifying the surrounding landscape and promoting biodiversity.



THE CASCADE

This rain garden fills up on rainy days, drains rainwater runoff using natural filters and rejuvenates the surrounding landscape by enriching biodiversity.





PEDESTRIANS & CYCLISTS REJOICE!

A Model Walking and Cycling Town

Enhanced connectivity with cycling network to be extended to about 21km. By 2020, 4km of cycling paths are expected to be completed, with the rest of the network to be completed by 2022. Footpaths will be widened, and safety signs and markings will be implemented along the cycling paths to make walking and cycling safer and more convenient.



Tampines Ave 1



Tampines Ave 4



Tampines Ave 5



Tampines Ave 8



To support the growth of Tampines as a regional employment centre in the east, there will be cycling path networks between Tampines and neighbouring towns such as Pasir Ris and Simei, as well as to the Changi Business Park and Singapore Expo. The Land Transport Authority (LTA) is studying the feasibility of building a cycling bridge over the Tampines Expressway (TPE) to connect Tampines and Pasir Ris towns, as well as a cycling underpass to link Tampines and Simei.



- Future Gateway (by 2021)
- Completed Gateway
- MRT Stations (by 2020)
- Park Connectors (Existing)
- Park Connectors (Future)
- Covered Linkway Enhancements (by 2020)
- Future Nature Ways (~17km by 2023)
- Completed Nature Ways

BRINGING NATURE CLOSER TO EVERYONE

Enhancing the Park Connector Network

New park connectors along Tampines Avenue 9 and 10 will link the Boulevard Park to the existing Bedok Reservoir Park. In addition, sections of existing park connectors will be enhanced to improve the user experience. The tracks will be resurfaced, lighting improved and amenities installed for the benefit of residents.

Enhanced Streetscape to Bring Nature to Your Doorstep

Come 2022, residents can have a more enjoyable commute with verdant greenery along main entryways and at the vicinity of transport hubs. Covered linkways will be enhanced with attractive flowering climbers, while along roadsides, Nature Ways with their tiered planting will provide a sense of being amidst an urban forest. Tiered planting mimics forest ecosystems and includes species of plants that attract birds and butterflies, thereby bringing residents closer to nature.



Covered Linkway Enhancements



New Boulevard Park

Residents can look forward to the opening of the new Boulevard Park in 2022. Adjacent to Tampines Eco Green, the 13-hectare park will provide more recreational opportunities for residents. For example, young ones can explore and develop their sense of discovery at the Nature Playgarden, and those wanting to keep fit can run and use the fitness equipment in a park setting and ambience.



VISION TO REALITY

MASTER PLAN

FUTURE

2020 - 2024

ACTIVE, BEAUTIFUL, CLEAN WATERS

ABC Waters Programme @ Sungei Tampines

A 1.4-kilometre stretch of Sungei Tampines between Tampines Avenue 7 and the Tampines Expressway will be enhanced alongside drainage improvement works to increase drainage capacity and provide a better experience for residents and park users.

The project is expected to be completed by the 4th quarter of 2021.



2 LOOKOUT DECKS



1 NATURALISED SLOPE

TAMPINES EXPRESSWAY

Tampines Eco Green



LOCATION
TAMPINES AVE 7 TO TAMPINES EXPRESSWAY

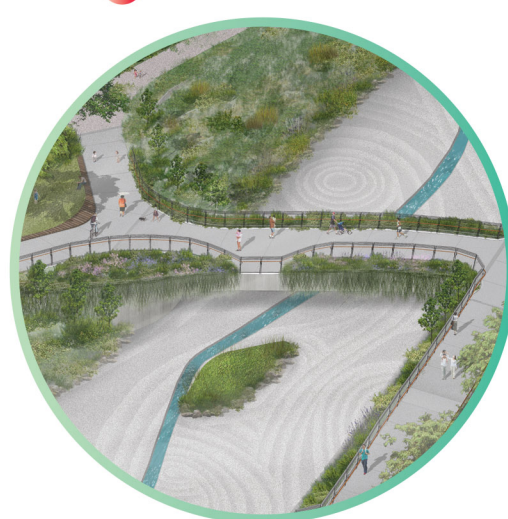
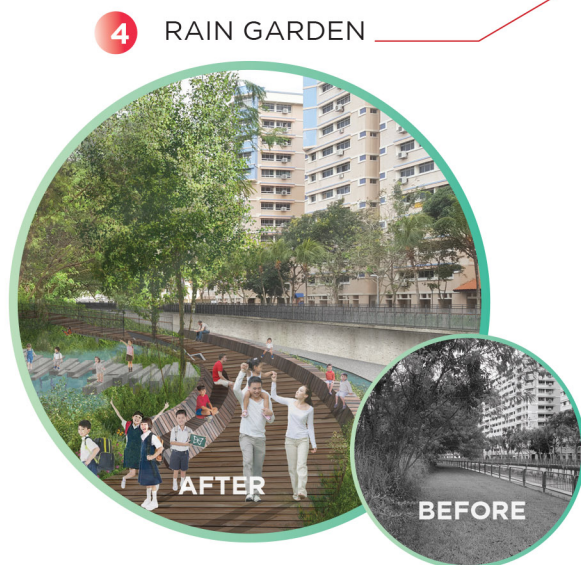
3 GARDEN BRIDGE

4 RAIN GARDEN

LEGEND

- 1 Naturalised Slope
- 2 Lookout Decks
- 3 Garden Bridge
- 4 Rain Garden

Artist's impression and subject to changes.



PUB ACTIVE, BEAUTIFUL, CLEAN WATERS

VISION TO REALITY

MASTER PLAN

FUTURE

2020 - 2024

TAMPINES NORTH POLYCLINIC

Tampines North Polyclinic will be coming your way in 2023. You can look forward to a range of primary care services for acute conditions, chronic disease management, women's and children's health services, as well as pharmacy and ancillary services (e.g. Radiology, Laboratory and Pediatrics) in a welcoming environment that is inspired by nature.

Health Up!
Keep Well, Get Well and Live Well
A SingHealth community programme

Coming to you in 2021. Health Up! is a community programme by SingHealth to empower residents in Tampines to Keep Well, Get Well and Live Well. Through community and digital engagements, we will have conversations about how we can better support you in your journey towards better health.

UPCOMING ELDERCARE FACILITIES



NURSING HOME AND SENIOR CARE CENTRE @ TAMPINES AVENUE 2
Estimated to be completed by 2020.



NURSING HOME AND SENIOR CARE CENTRE @ TAMPINES STREET 62
Estimated to be completed by 2022.



AT THE JUNCTION OF TAMPINES ST 61 AND TAMPINES AVE 6
Next to Tampines Care Home



VISION TO REALITY

MASTER PLAN

FUTURE

2020 - 2024

TRANSFORMING TAMPINES INTO AN ECO TOWN

A CIRCULAR ZERO WASTE SYSTEM

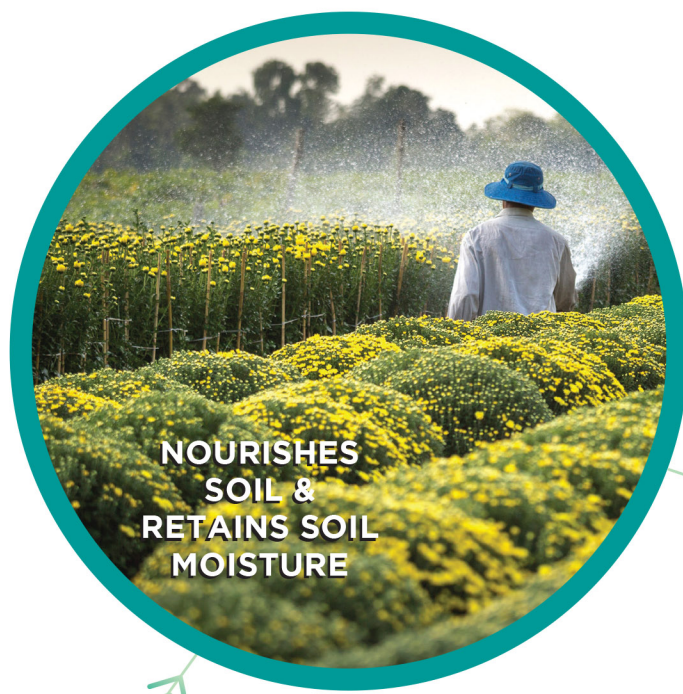
As part of our sustainability efforts, Tampines is committed to reducing waste and retaining soil moisture through the system of circular economy.

An example of such a project:

Our horticultural team collects the natural by-products of trees (such as branches, leaves etc.) and puts it through a wood chipping machine. This produces compost which can be used to enrich the soil. The soil will be used to provide more nutrients to the trees in our estate.

TRANSFORMING TAMPINES INTO AN ECO TOWN

SUSTAINABILITY @ TAMPINES PARK



Tampines Park will soon be home to two new urban farms!

A vertical vegetable farm will be set up at Block 146, while the existing pond in Tampines Park will be converted into a fish farm rearing tilapia.

Tampines Park will be the first precinct to host Singapore's first community-based circular ecosystem for food production.

Not only will this project reduce food waste, it will simultaneously strengthen the community's food resilience!

HOW WILL IT WORK?

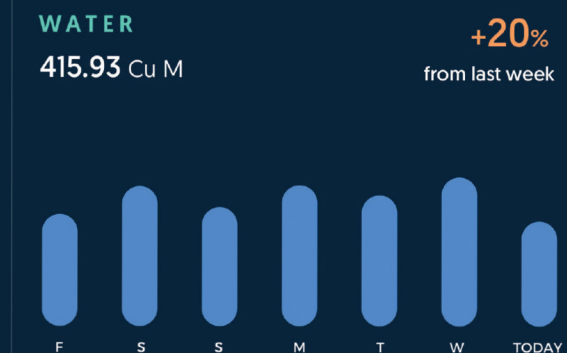
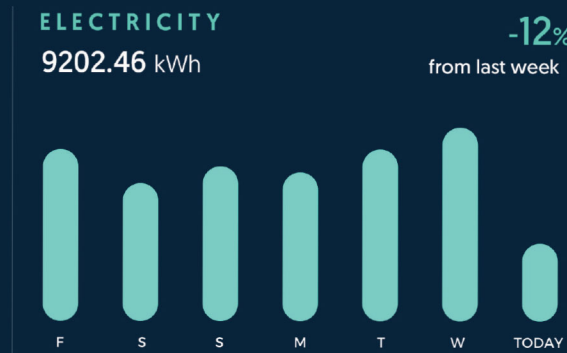
- 1 Food waste from residents will be collected and fed to Black Soldier Fly (BSF) larvae, a type of decomposer.
- 2 The nutrition-packed BSF larvae will be processed and fed to the fish, while the excreta (frass) from the larvae will be used to fertilise vegetables in the vertical farm.
- 3 The vegetables and tilapia will then be harvested, completing the cycle.

Hello!

Your block used **1314.57** kWh of electricity in the last 24 hours.

This is **20% less** than the previous day.

CO₂ **929**kg produced in your block in the last 24 hours.



DO YOU KNOW

On average, households in this block consume **385.5** kWh of electricity a month. What about you?

Check SP Utilities App to find out.

GREENUP QUIZ

Which supermarket bag is more eco-friendly?

- Plastic
- Paper

Scan QR code, tell us the right answer and earn rewards.



VISION TO REALITY

MASTER PLAN

FUTURE

2020 - 2024

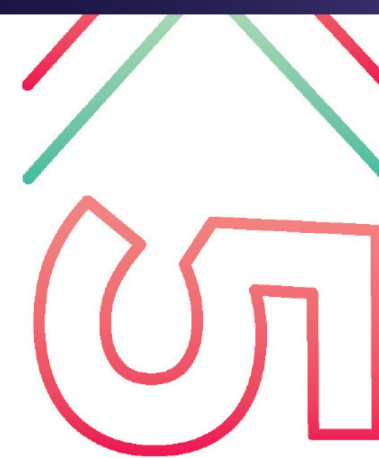
TRANSFORMING TAMPINES INTO AN ECO TOWN

AI-ENABLED, ECO-FRIENDLY SMART ENERGY SYSTEM

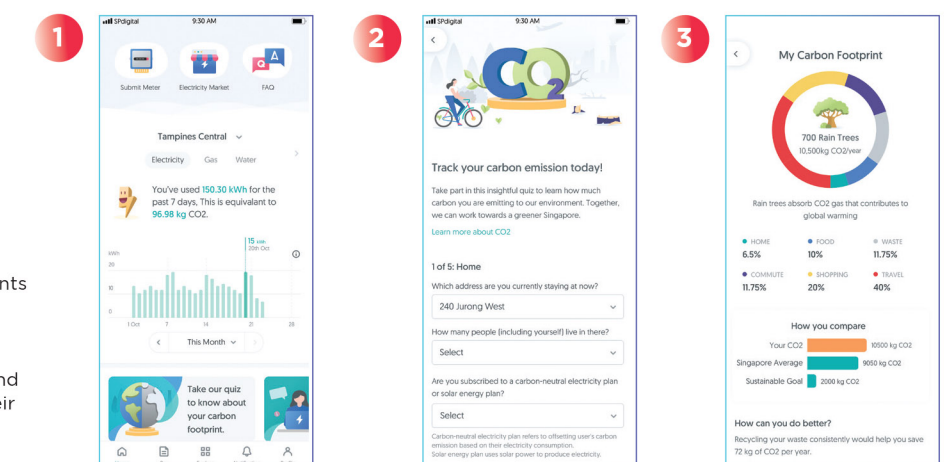
As part of our efforts to transform Tampines into an Eco Town, the Ministry of the Environment and Water Resources (MEWR), Temasek and SP Group are collaborating to install Eco Boards across several HDB blocks. The Eco Boards are low-energy digital displays which enable residents to be more aware of their impact on the environment.

Installed at lift lobbies, residents will get updates of their water and electricity consumption, and the amount of carbon emissions at each block. The boards will also provide residents with green tips on how to lower their electricity and water consumption. Block-level challenges will also be introduced through the boards to spur residents' adoption of a more sustainable lifestyle.

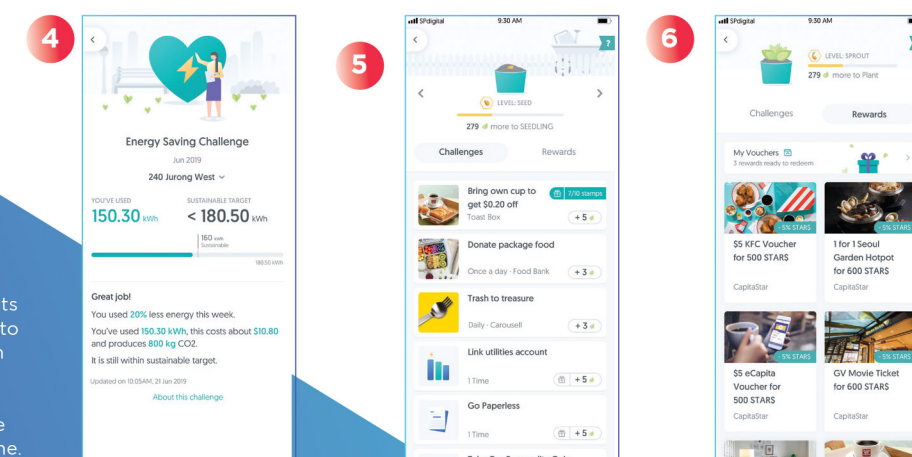
The Eco Boards will also help the Town Council to be more resource-efficient through greater awareness of the estate's utilities consumption, and to reduce wastage.



1, 2 and 3: Residents can find out their personal carbon footprint through a questionnaire and by monitoring their electricity consumption.



4, 5 and 6: Residents can also learn how to reduce their carbon emissions, and be rewarded for their green actions in the GreenUp programme.



SP Utilities Mobile App

Residents keen on tracking their household's utilities consumption can do so with the SP Utilities mobile app. The app will empower residents to make household decisions to enable an eco-friendly and hassle-free lifestyle.

The SP Utilities mobile app can be downloaded free here:

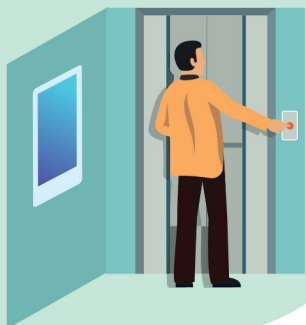


Car Drop-off
Porches

31



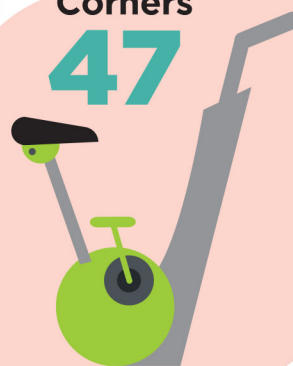
1,607
Digital Display Panels



52
Notice Boards

Fitness
Corners

47



Smart Lift
Surveillance
System

500

32

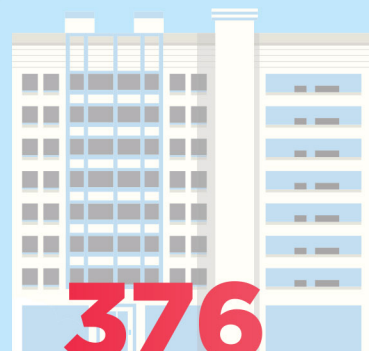
Playgrounds



HIGHLIGHTS OF COMPLETED PROJECTS IN NUMBERS

2014 - 2019

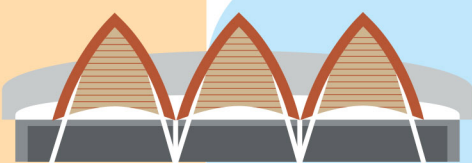
Counting the ways our residents have
enjoyed better amenities as a result of
projects completed by the Town Council
and its partners in the past 5 years ...



376

Blocks Painted

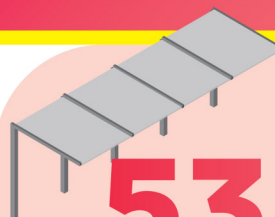
1



Market Upgraded

159

Blocks with
Solar Panels



53

Covered
Linkways

81

Number of
Lifts
Replaced



Senior Citizen Corner



Resident's
and Senior
Citizen's
Lounges

10

A New & Exciting Project!

Estimated date of
completion
2nd Quarter 2021.



New Basketball Court with Community Garden and Playground
Near Blk 201B

Supported by Community Improvement Projects Committee.